

APPLICABLE STANDARDS:

Shell Wall Thickness:ANSI B16.34

Face to Face:ANSI B16.10

End Flanges:ANSI B16.5

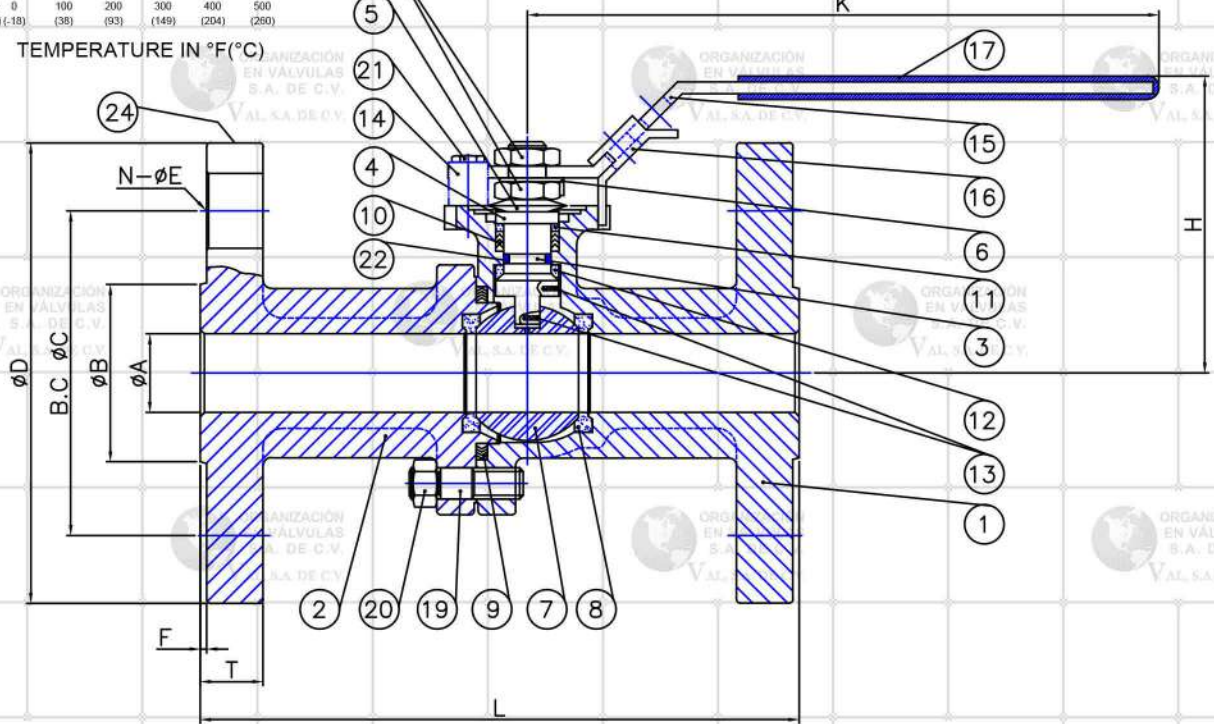
ISO 5211 MOUNTING PAD

NACE MR-0175

API 607

TORQUE IS INCLUDED 25% SAFE FACTOR

Fig No: **WARREN-6156FS**



**MATERIAL LIST**

NO.	PART NAME	MATERIAL	Q'TY
		STAINLESS STEEL	
1	BODY	ASTM A351-CF8M	1
2	CAP	ASTM A351-CF8M	1
3	STEM	17-4PH	1
4	SLEEVE	AISI 304	1
5	DISK SPRING WASHER	AISI 301	2
6	LOCK WASHER	AISI 304	1
7	BALL	ASTM A351-CF8M	1
8	SEAT	RPTFE	2
9	GASKET	SPIRAL WOUND WIRE (316/GRAPHITE)	1
10	STEM PACKING	GRAPHITE	1
11	PACKING	50%PTFE + 50%316	1
12	THRUST WASHER	TFM + 25% CARBON	1
13	ANTI-STATIC	AISI 316	1
14	SET SLEEVE	AISI 304	1
15	HANDLE	AISI 304	1
16	LOCATING LOCK	AISI 304	1
17	PLASTIC COVER	PLASTIC	1
18	THIN NUT	AISI 304	2
19	STUD	ASTM A193-B8M	4
20	NUT	ASTM A194-8M	4
21	BOLT	AISI 304	1
22	O-RING	HNBR	1
23	FIRE-SAFE TAG (API 607)	PLASTIC	1
24	NAMEPLATE	ASTM A666-304	1
25	HNBR SEALS	PLASTIC	1

**DIMENSIONS**

SIZE	PORT	B	C	D	T	F	N	E	H	K	L	M	J	Q	G	P	W	CV(GPM)	TORQUE(LBF-IN)	WEIGHT(LBS)	ISO5211	
DN15	1/2"	0.59	1.38	2.38	3.50	0.44	0.06	4	0.63	2.60	6.50	4.25	1.65	0.37	0.25	0.31	0.55	#10-24UNC	15	105	4.10	F04
DN20	3/4"	0.79	1.69	2.76	3.86	0.50	0.06	4	0.63	2.91	6.50	4.61	1.65	0.37	0.25	0.31	0.55	#10-24UNC	40	115	4.94	F04
DN25	1"	0.98	2.00	3.13	4.25	0.56	0.06	4	0.63	3.42	7.87	5.00	1.97	0.43	0.31	0.43	0.75	1/4-20UNC	70	135	7.36	F05
DN32	1-1/4"	1.25	2.52	3.50	4.63	0.63	0.06	4	0.63	3.62	7.87	5.51	1.97	0.43	0.31	0.43	0.75	1/4-20UNC	120	310	9.43	F05
DN40	1-1/2"	1.49	2.87	3.87	5.00	0.69	0.06	4	0.63	4.13	9.84	6.50	2.76	0.62	0.37	0.55	0.91	5/16-18UNC	240	510	13.76	F07
DN50	2"	1.97	3.62	4.74	5.98	0.75	0.06	4	0.75	4.53	10.43	7.0	2.76	0.62	0.37	0.55	0.91	5/16-18UNC	400	596	20.12	F07

TEST PRESSURE:

Inspection Per API 598

Shell (by Water), 425 Psig

Seat (by Air), 80 Psig

BODY MARK

WARREN

2 - 150

CF8M

STEAM RATING:

150 PSI WSP

	APPROVED BY.	CHECK BY.	DRAWN BY.	DRAWINGNO.	MATERIAL	UNIT	DESCRIPTION
SIGN	CHANG	PETER CHEN	CHY	WARREN-6156FS	ASTM A351-CF8M	INCH	TWO PIECES BALL VALVES, FLANGE END, FULL BORE, ANSI CLASS 150
DATE	11/08/2019	11/08/2019	11/08/2019	REVISION 05	SCALE	FREE	





Fig No: **WARREN-6156FS**

**MATERIAL LIST**

NO.	PART NAME	MATERIAL		Q'TY
			STAINLESS STEEL	
1	BODY	ASTM A351-CF8M		1
2	CAP	ASTM A351-CF8M		1
3	STEM	ASTM A276-316/17-4PH(FOR 6",8")		1
4	BALL	ASTM A351-CF8M		1
5	SEAT	RPTFE		2
6	STEM PACKING	GRAPHITE		1
7	PACKING	50%PTFE + 50%316		2
8	THRUST WASHER	TFM + 25% CARBON		1
9	GASKET	SPIRAL WOUND WIRE (316/GRAPHITE)		1
10	ANTI-STATIC	AISI 316		1
11	TRAVEL STOPPER	AISI 304		1
12	SNAP RING	NICKEL PLATED CARBON STEEL		2
13	HANDLE	DUCTILE IRON (FCD )/PIPE GRIP(S15C)		1
14	STUD	ASTM A193-B8M		4~10
15	NUT	ASTM A194-8M		4~10
16	GLAND BOLT	ASTM A193-B8		2
17	GLAND	ASTM A351-CF8		1
18	O-RING	HNBR		1
19	STOP HOUSING	ASTM A351-CF8		1
20	HOUSING BOLT	AISI 304		4
21	FIRE-SAFE TAG (API 607)	PLASTIC		1
22	NAMEPLATE	ASTM A666-304		1
23	HNBR SEALS	PLASTIC		1

BODY MARK

WARREN  
3 - 150  
CF8M

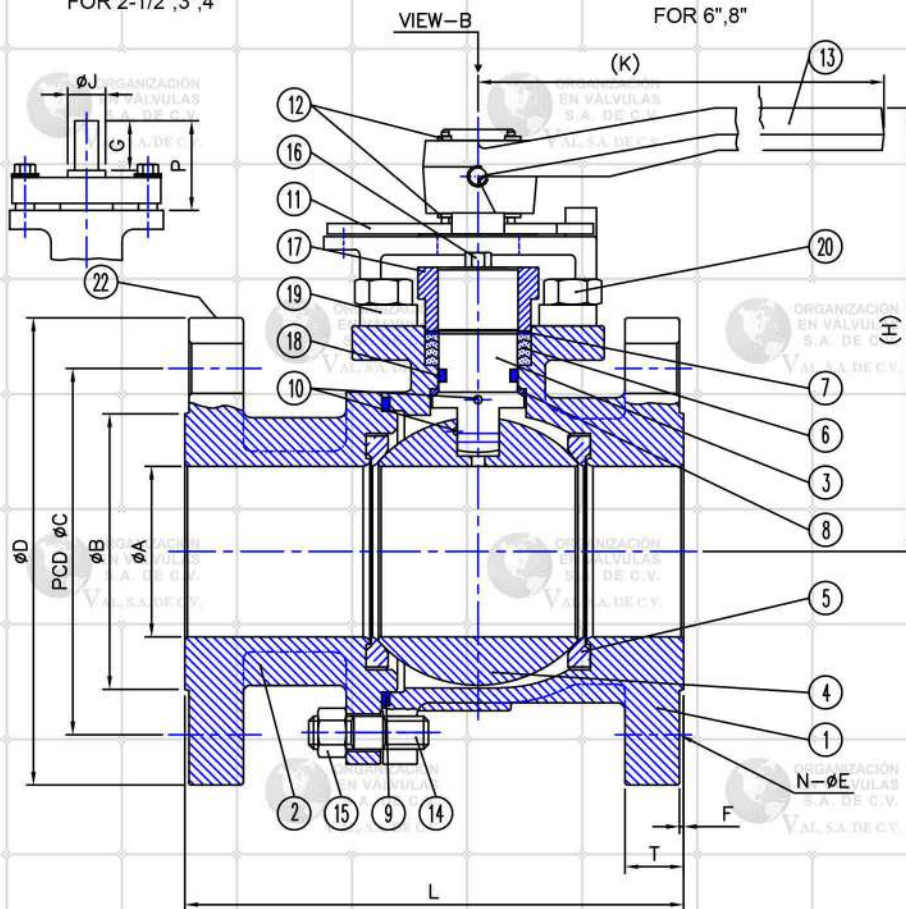
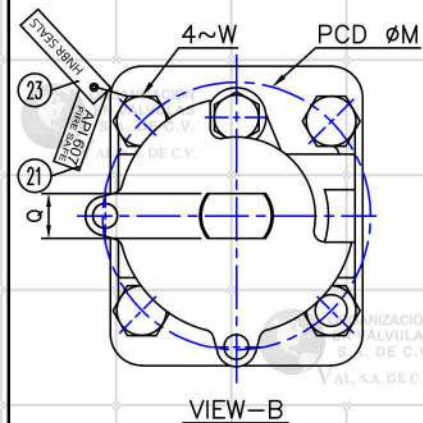
FOR 2-1/2",3",4"

BODY MARK

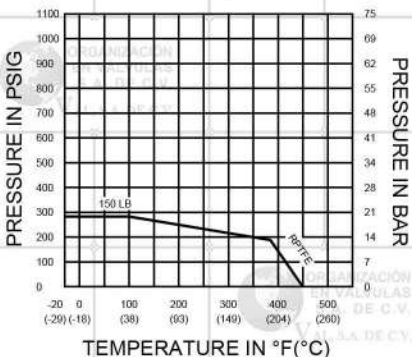
WARREN  
6 - 150  
CF8M  
XXXXX

HEAT NO.

FOR 6",8"



Pressure VS. Temperature Chart



TEST PRESSURE:

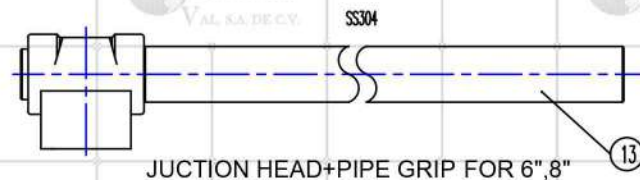
APPLICABLE STANDARDS:

Inspection Per API 598  
Shell (by Water), 425 Psig  
Seat (by Air), 80 Psig

Shell Wall Thickness:ANSI B16.34  
Face to Face:ANSI B16.10  
End Flanges:ANSI B16.5

STEAM RATING:  
150 PSI WSP

ISO 5211 MOUNTING PAD  
NACE MR-0175  
API 607  
TORQUE IS INCLUDED 25% SAFE FACTOR



**DIMENSIONS**

unit:inch

SIZE	PORT	B	C	D	T	F	N	E	H	K	L	M	J	Q	G	P	W	CV(GPM)	TORQUE(LBF-IN)	WEIGHT(LBS)	ISO5211	
DN65	2-1/2"	2.56	4.13	5.49	7.01	0.88	0.06	4	0.75	6.50	15.35	7.48	4.02	1.10	0.67	1.75	3.07	1/2-13UNC	700	820	33.8	F10
DN80	3"	2.99	5.00	6.00	7.48	0.94	0.06	4	0.75	6.54	15.35	7.99	4.02	1.10	0.67	1.75	3.07	1/2-13UNC	980	1100	36.7	F10
DN100	4"	4.00	6.18	7.50	9.02	0.94	0.06	8	0.75	7.21	15.35	9.02	4.02	1.10	0.67	1.75	3.07	1/2-13UNC	1700	1500	61.6	F10
DN150	6"	5.98	8.50	9.51	10.98	1.00	0.06	8	0.87	11.22	25.60	15.51	4.92	1.71	1.02	1.65	3.58	1/2-13UNC	5000	4000	169.5	F12
DN200	8"	7.87	10.63	11.75	13.50	1.13	0.06	8	0.87	11.58	37.40	17.99	4.92	1.71	1.02	1.65	3.58	1/2-13UNC	10000	6200	292.5	F12



	APPROVED BY:	CHECK BY:	DRAWN BY:	DRAWINGNO.	MATERIAL	UNIT	DESCRIPTION
SIGN	CHANG	PETER CHEN	CHY	WARREN-6156FS	ASTM A351-CF8M	INCH	TWO PIECES BALL VALVES, FLANGE END, FULL BORE, ANSI CLASS 150
DATE	06/26/2019	06/26/2019	06/26/2019	REVISION 04	SCALE	FREE	