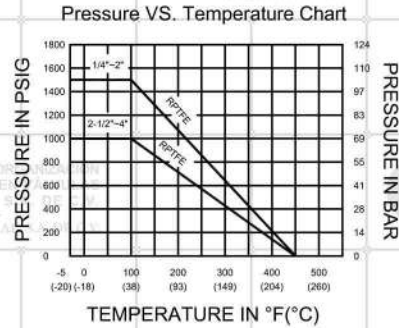
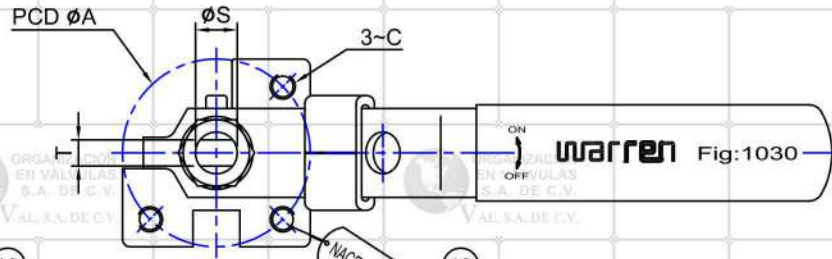


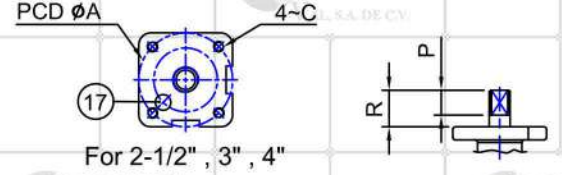
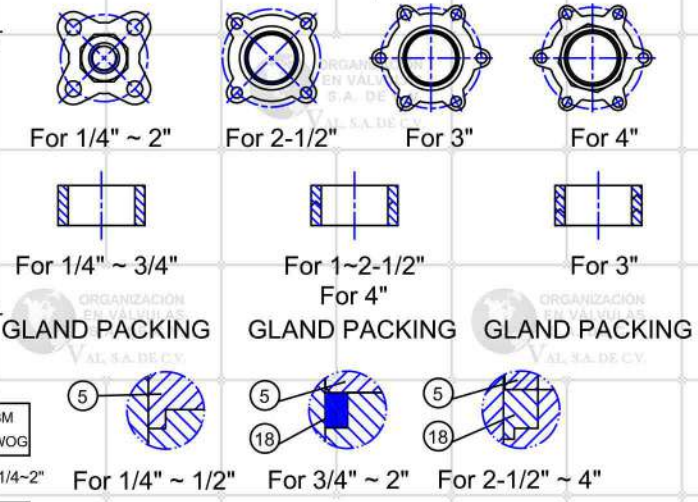
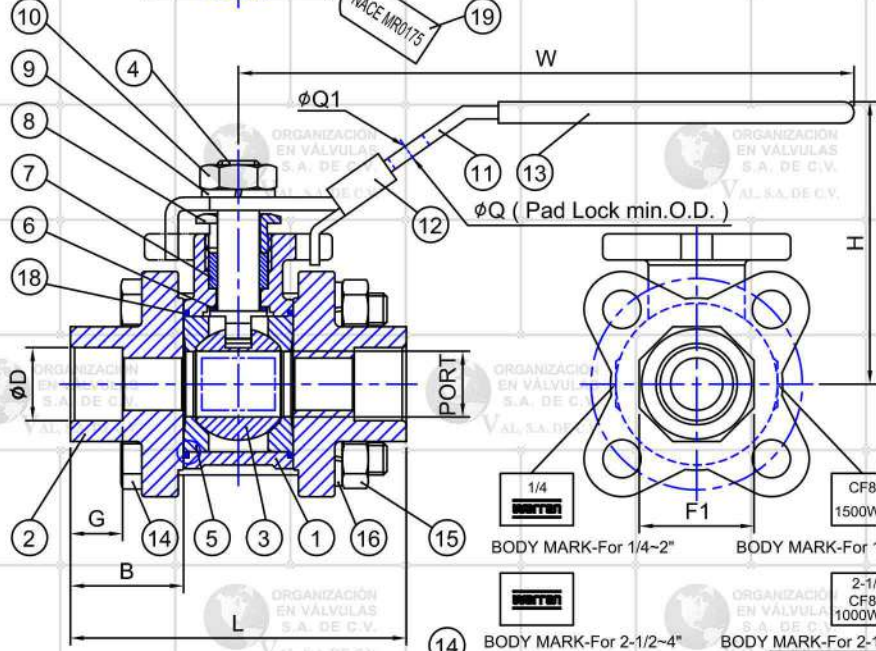
Fig No:

WARREN-1030-S



MATERIAL LIST

NO.	PART NAME	MATERIAL	Q'TY
		STAINLESS STEEL	
1	BODY	ASTM A351-CF8M	1
2	CAP	ASTM A351-CF3M	2
3	BALL	ASTM A351-CF8M	1
4	STEM	ASTM A276-316	1
5	SEAT	RPTFE	2
6	THRUST WASHER	PTFE	1
7	STEM PACKING	PTFE	1SET
8	GLAND NUT	AISI SS304	1
9	SPRING WASHER (1)	AISI SS304	1
10	NUT (1)	AISI SS304	1
11	HANDLE	AISI SS304	1
12	LOCKING PAD	AISI SS304	1
13	HANDLE COVER	PLASTIC	1
14	BOLT	ASTM A193-B8M	4~6
15	NUT (2)	ASTM A194-8M	4~12
16	SPRING WASHER (2)	AISI SS316	4~12
17	SET SCREW	AISI SS304	1
18	GASKET	PTFE	2
19	NACE TAG	ASTM A666 304	1



STEAM RATING:
150 PSI WSP

TEST PRESSURE:
Inspection Per API 598 (2-1/2\"/>

APPLICABLE STANDARDS:
Socket Weld To ANSI B 16.11
NACE MR 01-75
ISO 5211 MOUNTING PAD

1/4\"/>

unit:inch

SIZE	PORT	D	F1	B	G	L	H	W	A	C	S	T	P	R	Q	Q1	CV(GPM)	TORQUE(LBF-IN)	WEIGHT(LBS)	ISO5211	
DN8	1/4"	0.50	0.55	0.87	0.85	0.39	2.54	2.17	4.72	1.42	3/16-24UNC	0.31	0.20	0.37	0.55	0.275	0.319	21	55.3	1.01	F03
DN10	3/8"	0.50	0.71	0.87	0.85	0.39	2.54	2.17	4.72	1.42	3/16-24UNC	0.31	0.20	0.37	0.55	0.275	0.319	24	55.3	0.97	F03
DN15	1/2"	0.59	0.87	1.07	0.83	0.39	2.54	2.36	5.39	1.42	3/16-24UNC	0.37	0.25	0.52	0.75	0.275	0.319	37	77.5	1.37	F03
DN20	3/4"	0.79	1.08	1.33	1.00	0.51	3.18	2.48	5.39	1.42	3/16-24UNC	0.37	0.25	0.52	0.74	0.275	0.319	68	110.6	1.85	F03
DN25	1"	0.98	1.36	1.57	1.11	0.51	3.74	3.35	6.50	1.65	3/16-24UNC	0.44	0.31	0.71	0.98	0.275	0.319	109	166	2.78	F04
DN32	1-1/4"	1.26	1.69	1.91	1.19	0.51	4.32	3.66	6.50	1.97	1/4-20UNC	0.44	0.31	0.61	0.96	0.275	0.319	185	232.3	5.00	F05
DN40	1-1/2"	1.50	1.93	2.19	1.41	0.51	5.10	3.90	7.68	1.97	1/4-20UNC	0.50	0.35	0.74	1.04	0.275	0.319	268	387.2	6.08	F05
DN50	2"	2.00	2.42	2.66	1.51	0.63	5.85	4.45	8.07	2.76	5/16-18UNC	0.50	0.35	0.70	1.07	0.275	0.319	486	619.6	9.52	F07
DN65	2-1/2"	2.56	2.91	Ø3.46	1.91	0.63	7.20	5.51	11.02	4.02	5/16-18UNC	0.75	0.47	1.08	1.69	0.354	0.394	843	829.8	20.02	F10
DN80	3"	3.15	3.54	Ø4.09	2.15	0.63	8.23	5.91	12.79	4.02	7/16-14UNC	0.75	0.47	1.09	1.46	0.354	0.394	1150	1217	31.88	F10
DN100	4"	3.94	4.55	5.06	2.17	0.79	9.25	6.69	12.79	4.02	7/16-14UNC	1.00	0.63	1.55	2.05	0.354	0.394	1932	2765.9	52.16	F10

DIMENSIONS



APPROVED BY.	CHECK BY.	DRAWN BY.	DRAWINGNO.	MATERIAL	UNIT	DESCRIPTION
SIGN	CHANG	PETER CHEN	Ann	WARREN-1030-S	ASTM A351-CF8M	INCH
DATE	10/27/2016	10/27/2016	10/27/2016	REVISION	05	SCALE
						FREE
						DESCRIPTION
						THREE PIECES BALL VALVES
						SOCKET WELD END, FULL BORE,
						1500 / 1000 WOG